

TASK: REGULAR BUS

Construct a mobile model of a regular bus equipped with a route number plate located on a vertically standing axis.

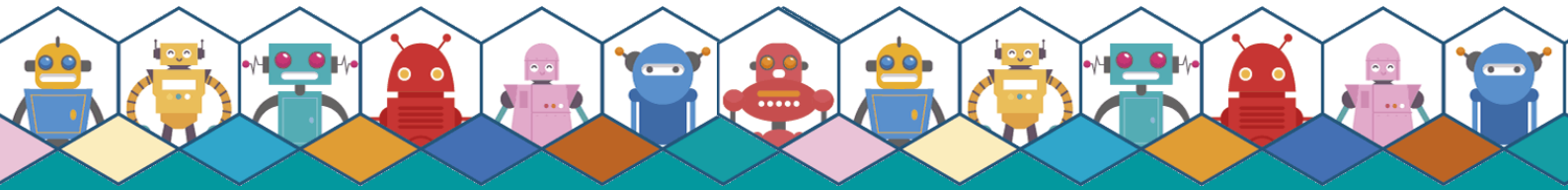
The route number plate should rotate slowly (slower than the bus is moving)

POINTS FOR DESIGN

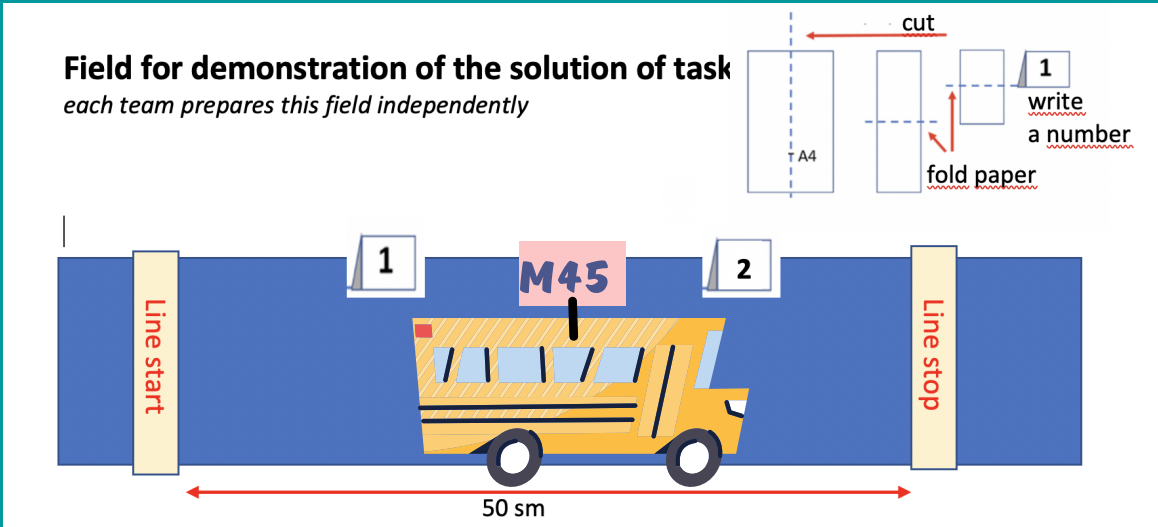
- Constructed a model of a bus moving manually
- Axle with route number plate installed vertically
- Axle with number plate rotates manually
- Axle with number plate rotates automatically when the bus is moving
- The rotation speed of the axle with the number plate is less than the speed of the bus
- The bus model is driven by a motor
- Route number rotation and bus movement from one motor

- 1
- 1
- 1
- 2
- 2
- 2
- 5





CREATE A POLYGON FOR THE ROBOT



PROGRAMMING

POINTS FOR PROGRAM

Forward to stop 1 by time / to sensor
 Display the message "Stop 1"
 Waiting for the "Stop 1" sign to be removed - imitation that all people got on the bus / Waiting 2 seconds
 Forward to stop 2 by time / to sensor
 Display the message "Stop 2"
 Waiting for the "Stop 2" sign to be removed - imitation that all people got on the bus / Waiting 3 seconds
 Forward to the stop line in time
 Stop
 During work:
 The hub indicator is green when the robot is moving.
 The hub indicator color is red when the robot is standing

2/5
1
5/1
2/5
1
5/1
2
1
4
4

