

### TASK: REGULAR BUS

Construct a mobile model of a regular bus equipped with a route number plate located on a vertically standing axis.

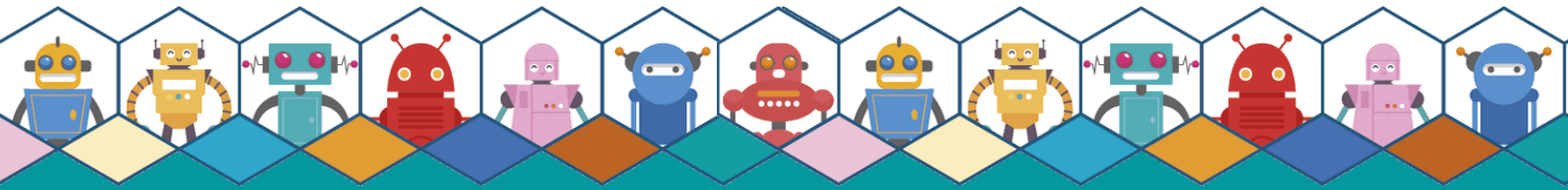
The route number plate should rotate slowly (slower than the bus is moving)

### POINTS FOR DESIGN

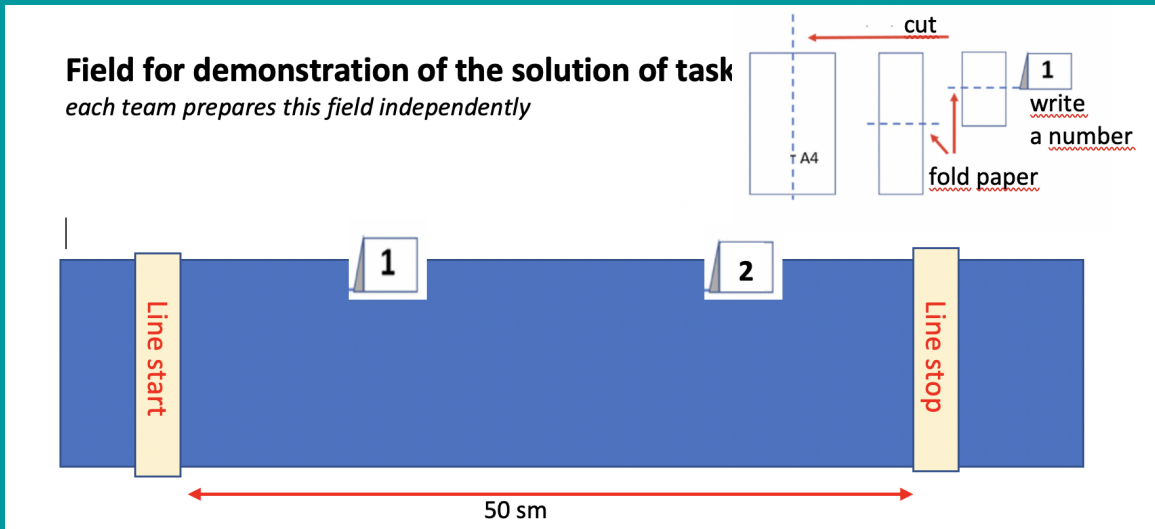
- Constructed a model of a bus moving manually
- Axle with route number plate installed vertically
- Axle with number plate rotates manually
- Axle with number plate rotates automatically when the bus is moving
- The rotation speed of the axle with the number plate is less than the speed of the bus
- The bus model is driven by a motor
- Route number rotation and bus movement from one motor

- 1
- 1
- 1
- 2
- 2
- 2
- 5





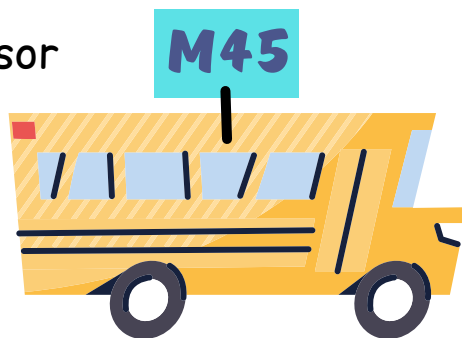
### CREATE A POLYGON FOR THE ROBOT



### PROGRAMMING

### POINTS FOR PROGRAM

Forward to stop 1 by time / by sensor  
 Stop  
 Display the message "Stop 1"  
 Wait 3 sec  
 Forward to stop 2 by time / by sensor  
 Stop  
 Display the message "Stop 2"  
 Wait 3 sec  
 Forward to the "Line Stop" by time  
 Stop



2/5  
 1  
 1  
 2  
 2/5  
 1  
 1  
 2  
 2  
 1

